

## Sustainable Land Management → DRR

→ Land: vegetation, soil, water

→ ... maintaining productivity and other services

Hanspeter Liniger Director WOCAT, Secretariat,  
Centre for Development and Environment,  
University of Bern, Switzerland

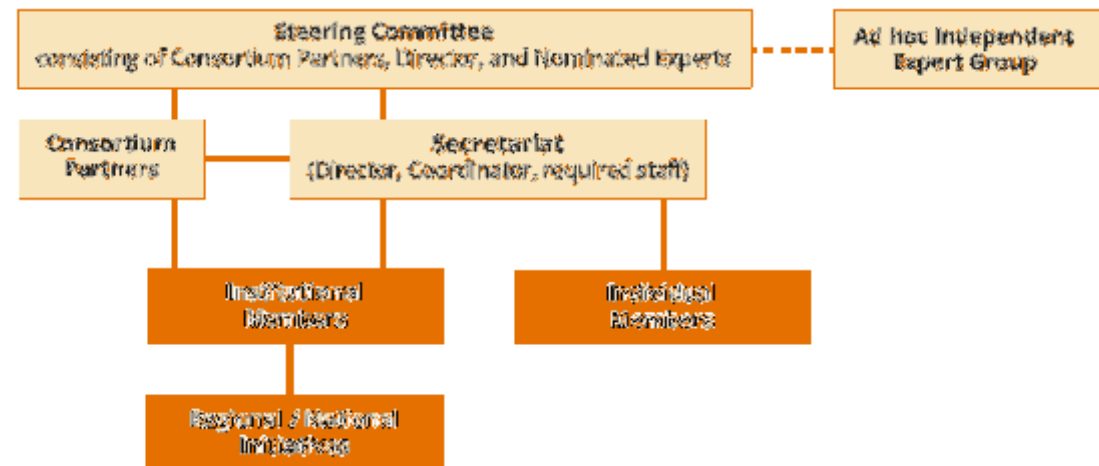
Bern Dec 8 2017



# WOCAT Network



## WOCAT International with eight Consortium Partners



## WOCAT Regional / National with partners in over 50 countries



- established in 1992
- → 25 Years

# Knowledge Base



- **standardized and harmonized tools and methods for documenting and sharing SLM and decision making**



**UNCCD recognition 2014:**  
*primary recommended database*

## Key Numbers

Sept 2017

- **1638** SLM Practices published from **124** countries by **294** users.
  - 825 SLM Technologies
  - 360 SLM Approaches
  - 453 UNCCD PRAIS Practices
- **217** new practices drafted in the past 90 days.
- **15530** visits from **159** different countries since launch in August 2016.



## SLM knowledge products

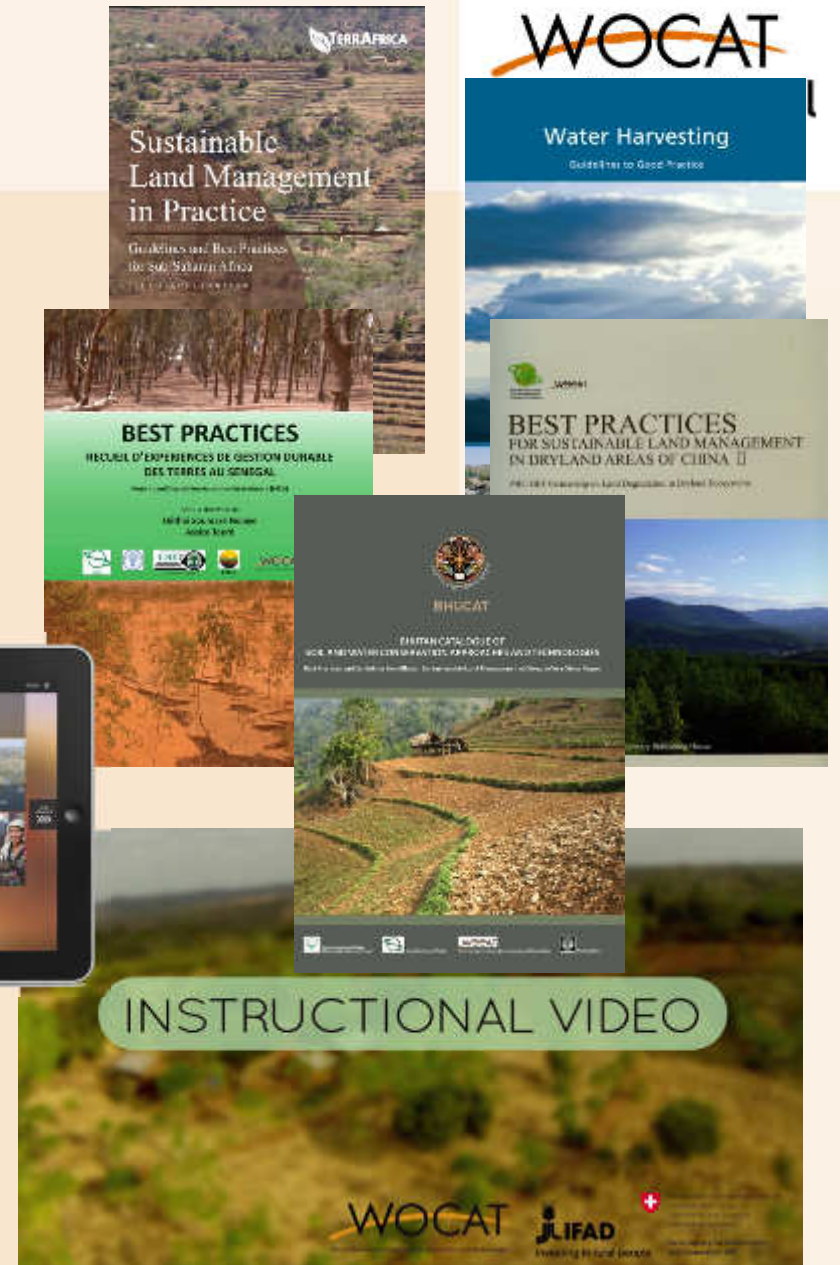
- online database
- books
- videos
- tablet app

→ for different users  
in different formats

→ *in different languages*



... supporting decision making and investments



[www.wocat.net](http://www.wocat.net)

... for and with whom?

→ capacity building



- SLM specialists working with land users at the field level
- Planners, decision makers at regional/national level

**Ultimate target group & beneficiaries:**  
land users and public





# SLM and DRR? → Flood



Zizhou: 18 July 2017: Damage in the city: 4 billion Yuan (600 million US\$)?





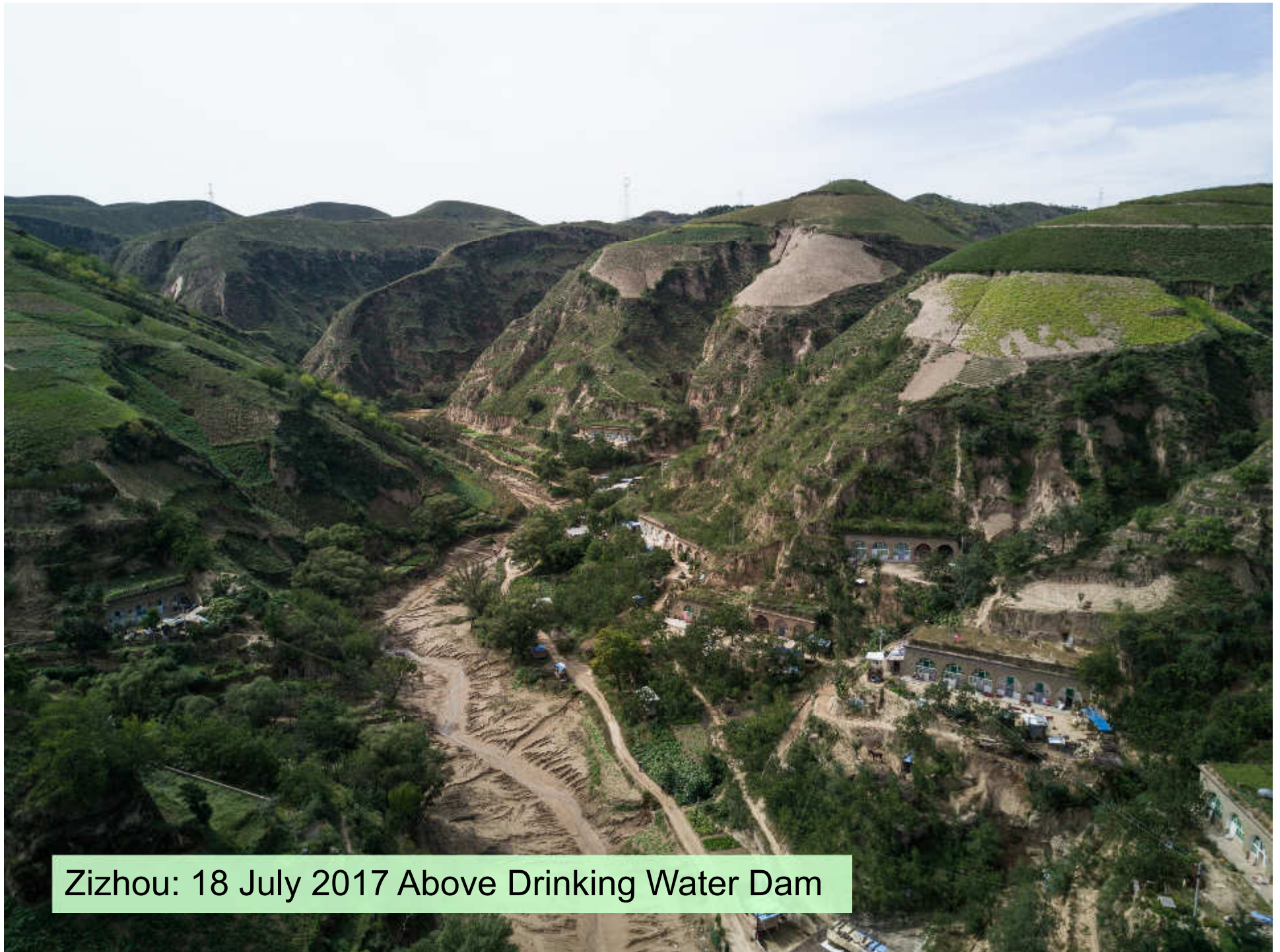
Zizhou: 18 July 2017 Flood and Sedimentation in the city





Zizhou: 18 July 2017 Drinking Water Dam





Zizhou: 18 July 2017 Above Drinking Water Dam

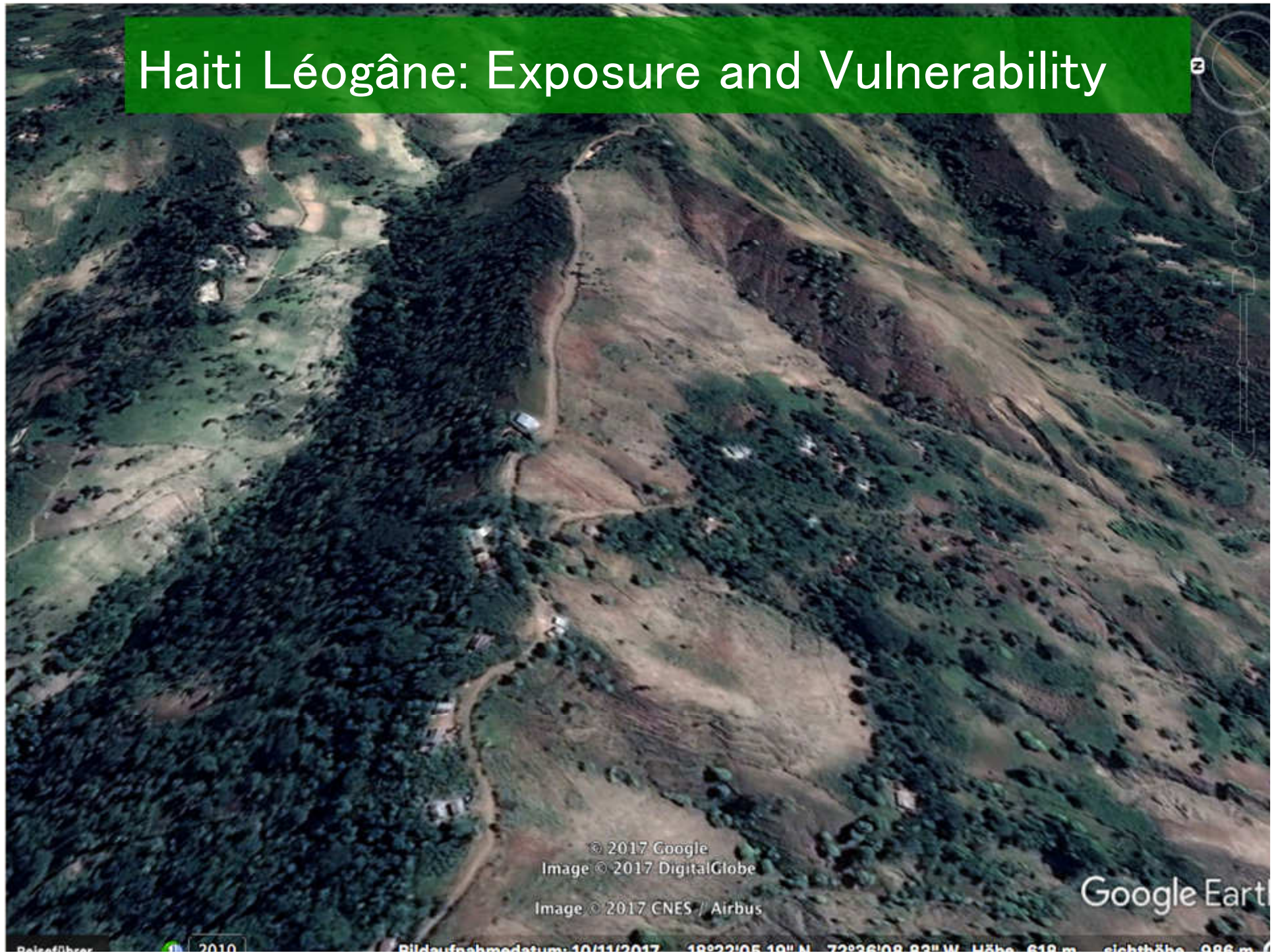




Zizhou: 18 July 2017... Rainfall: ...? Land management → Impact: on- off-site!



# Haiti Léogâne: Exposure and Vulnerability



© 2017 Google  
Image © 2017 DigitalGlobe  
Image © 2017 CNES // Airbus

Google Earth

Reiseführer



2010

Bildaufnahmedatum 10/11/2017

18°22'05.10"N, 72°26'08.82"W, Höhe 618 m, Seeshöhe 986 m



vulnerable land = vulnerable people





... downstream / off-site impacts

‘no wall can stop the water, ... it must be stopped higher up’





... production and water loss







Spring

Eco DRR, EbS, CSA, ... → Benefits of SLM  
→ Options!



# Contribution of Research: Knowledge and gaps

- Spread of SLM
- Impacts/benefits & costs of (S)LM (quantified)
  - On-site (Local)  
(food and water security, BD, carbon benefits, ...)
  - Off-site! (regional)  
DRR: flood, drought, pollution
- Monitoring, Scenarios  
→ involvement of students?
- Capacity to share and use knowledge for decision making









# Nature-based / SLM-based solutions

WOCAT

## 1 Approach

Government SWC-Afforestation for Yellow River basin, supported by World Bank (PRC-GEF)

1

3

2

4

## 4 Technologies

Where? Costs? Impacts? Food security?  
Combatting desertification?  
Adapted to climate change?



# Panel Discussion

## Nature-based / SLM-based solutions for DRR

- SLM is in all 3 UN Conventions: **Desertification**, **Climate Change** and **Biodiversity** ...
- ... in SDGs: ...Food Security, Water conflicts/scarcity, Land Degradation Neutrality, ...

Food Security



Water Scarcity



Desertification

Climate Change



Biodiversity





“Sustainable Land Management is simply about people looking after the land – for the present and for the future.”

SLM provides flexible, adaptable solutions in a world of fast-changing natural conditions (e.g. climate change and variability, extreme weather events), social conditions (e.g. migration, feminization of agriculture), and economic conditions (e.g. changing markets).

Global and local development challenges demand that land users innovate and find ways of managing their land sustainably, staying resilient in the face of change and maintaining or improving their livelihoods and living conditions.



### **What is SLM for WOCAT?**

SLM is defined as the use of land resources, including soils, water, animals and plants, for the production of goods to meet changing human needs, while simultaneously ensuring the long-term productive potential of these resources and the maintenance of their environmental functions.

» [Read more](#)



# WOCAT's mission



... is to support *innovation and decision-making in SLM* by:

- **global network**
- **standardized tools and methods**
- **global knowledge base**
- **capacity building**









