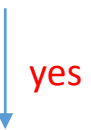


Natural Hazard Risks and Cost-Benefit of Mitigation Measures

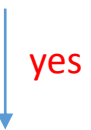
Decision Tree for Assessment Tool selection

Required data
 Hazard map (HM)
 Intensity maps (IM)

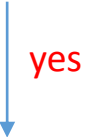
I prefer a quantitative to a qualitative assessment



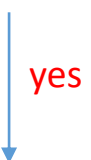
I need a sound assessment as the basis for final decision of intervention



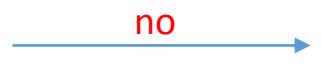
I have the necessary time and skills for a participative definition of the risk parameters



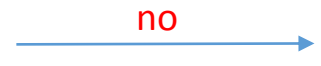
I prefer a cartographic representation of the inputs and results for traceability and I have the resources for a tool customizing



SDC-Tool MiResiliencia

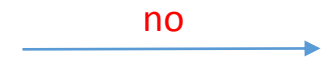
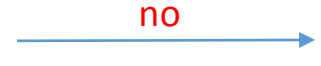


IFRC-Tool



Caritas-Tool

No sound assessment possible



SRC-Tool

